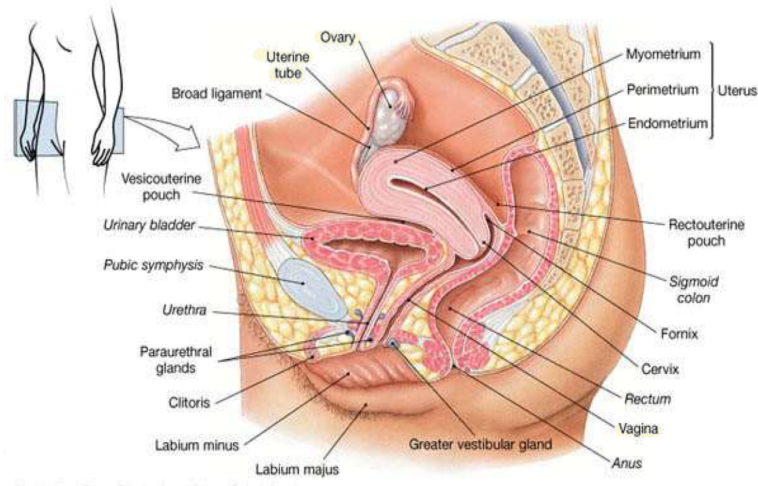
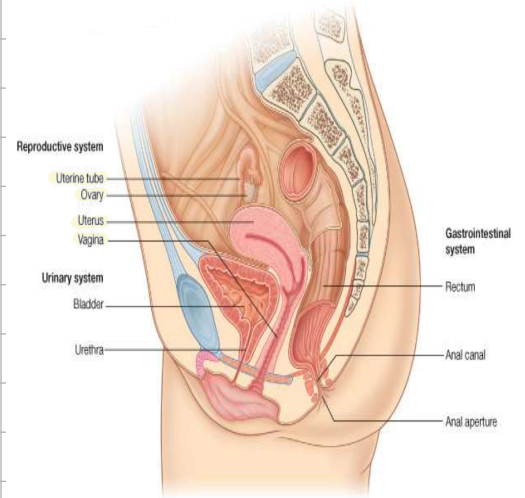


General Embryology

Female reproductive system

→ Organs of the female reproductive system.

- 1-The ovaries (female gonads) ^{مبايض}
- 2-The uterine (fallopian) tubes or Oviducts
- 3-The uterus
- 4-The vagina
- 5- External organs, which are collectively called the vulva ^{فتحة}
- 6-The mammary glands ^{ثدي}



Ovaries

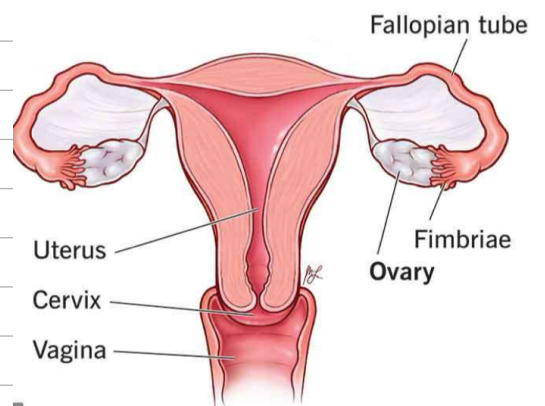
Are paired glands that resemble unshelled almonds in size and shape. ^{مقرنة} ^{تعاثر} ^{غير مطولة} ^{لوز}

Site of the Ovary: In the ovarian fossa in the lateral wall of the pelvis ^{جوف}

Function : The ovaries produce

- A. Gametes, secondary oocytes ^{بويضات}
- B. Female sex hormones including progesterone ¹ and estrogens ²

Ovaries



uterine tubes

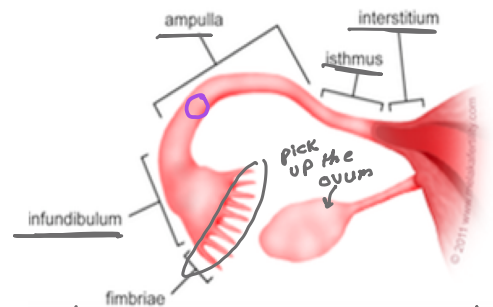
Females have two uterine (fallopian) tubes, that extend laterally from the uterus

Functions:

- ① They provide a route for sperm to reach an ovum. ^{بويضة}
- ② Transport Secondary oocytes. ^{بويضات}
- ③ Fertilized ova from the ovaries to the uterus. ^{بويضة مابين}

Parts of the Tube:

From lateral to medial, it has four parts;



1. Infundibulum : استقبال , it doesn't have a contact with the ovaries. ^{lateral} ^{medial}

- It is the lateral part of the tube which is closely related to the ovary.
- Its bottom presents the abdominal ostium ^{قوسية} which have fimbriae ^{ظلال} which spread over the surface of the ovary.
- During ovulation, the fimbriae trap the oocyte into the uterine tube. ^{بإضافة}

2. Ampulla :

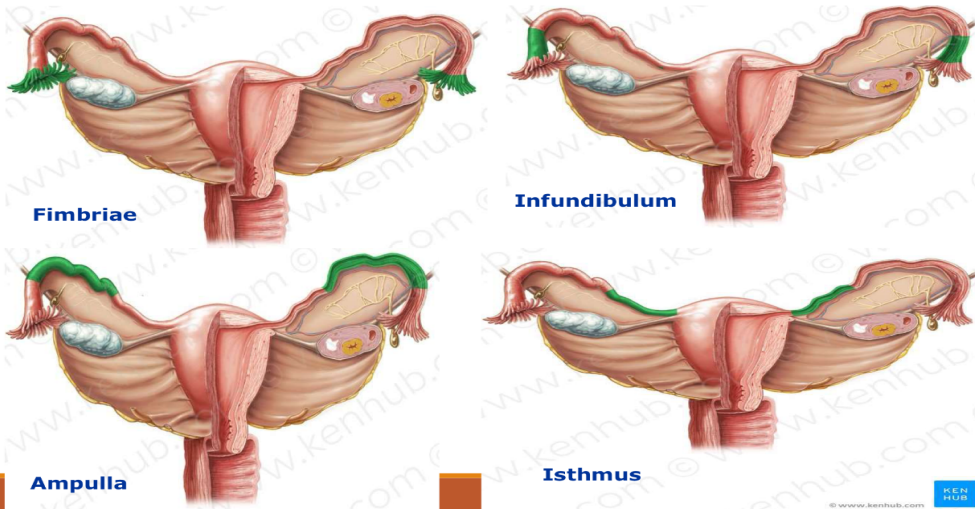
- ✓ It is the **widest** and longest part of the tube
- ✓ It is the site of fertilization.

3. Isthmus:

It is **narrow**

4. Uterine (intramural) part :

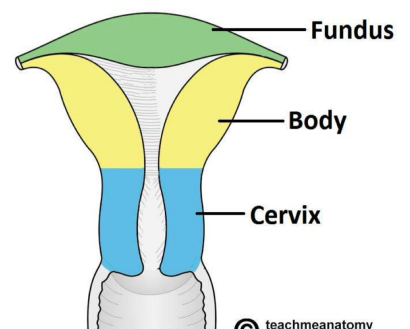
- It is the **short and narrowest** segment
- It opens in the uterine cavity through the uterine ostium



UTERUS

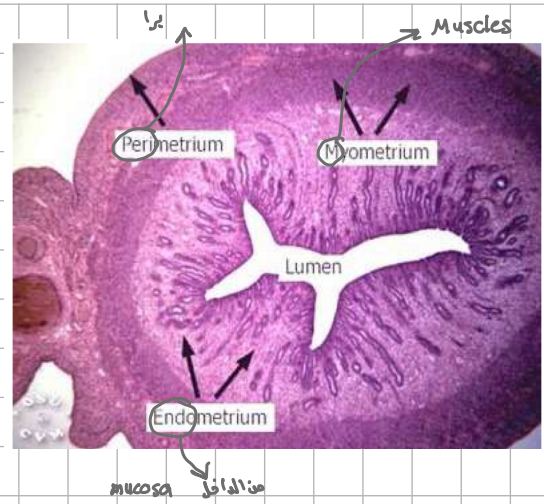
The uterus is a ^{مجوف} hollow thick-walled, ^{كحزبي} pear-shaped muscular organ situated in the pelvis

It composed of fundus ,body and cervix. ^{عنق الرحم}



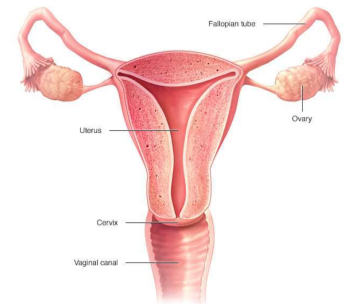
Wall of **body and fundus** has 3 layers

- The lining mucosa is called Endometrium
- The muscular layer called Myometrium
- The external layer Perimetrium



Vagina

- It is a fibromuscular tube
- It extends from the uterus down to the vestibule



Male genital system

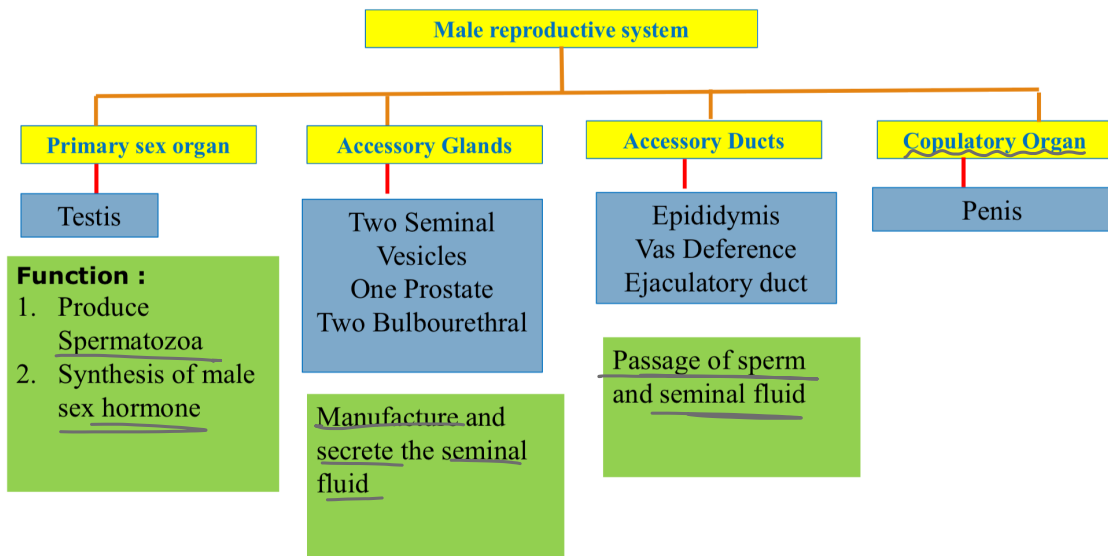
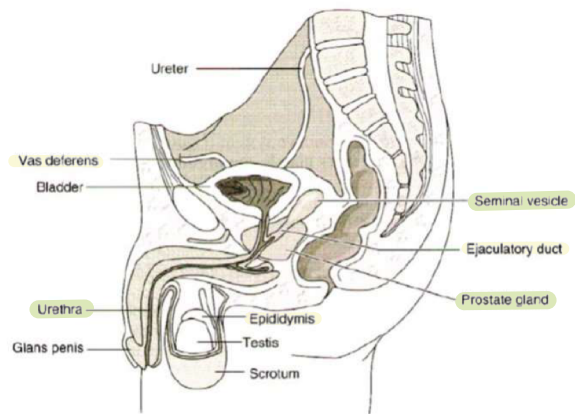
Components of male reproductive system

① **Primary sex organ:**

- Paired testis

② **Secondary sex organs:**

- **Genital ducts** (Epididymis, Vas Deference and Ejaculatory duct)
- **Accessory glands** (the paired seminal vesicles, the single prostate gland and two bulbourethral glands)
- The penis

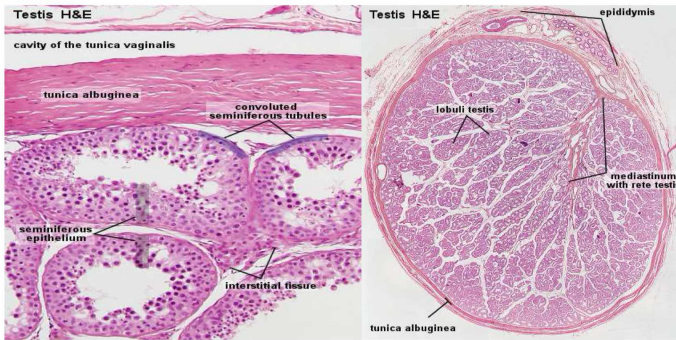
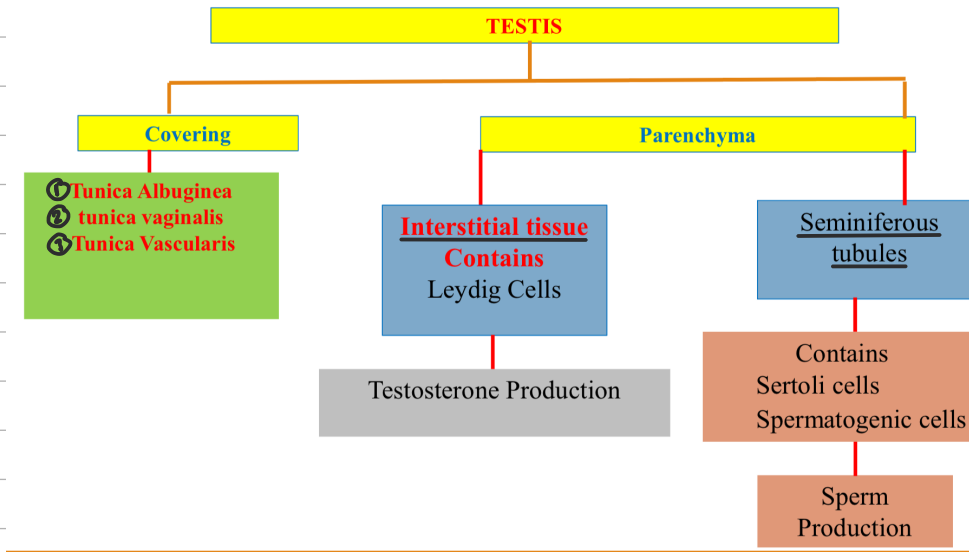
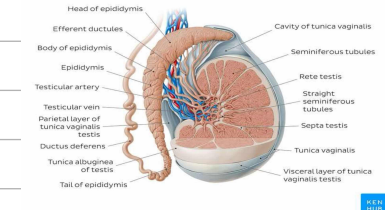
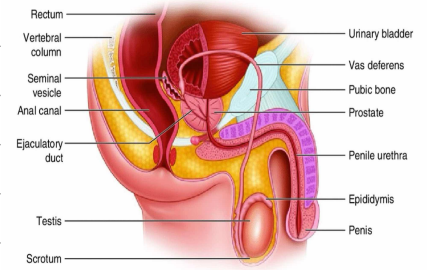
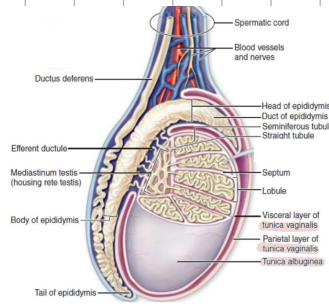


Testis

→ is the male primary sex organs, suspended in the scrotum.
كيس الصفن

It produces :-

- 1- Gametes (sperms)
- 2- Male sex hormones (testosterone)



Male genital organs

Summary

1. Scrotum (protection and suitable temperature)
2. Testis (production of sperms and testosterone)
3. Epididymis (transport and maturation of sperm)
4. Vas deference (transport of sperm)
5. Seminal vesicles (produces an alkaline secretion rich in fructose and mucus)
6. Ejaculatory ducts
7. Prostate gland (Secretes prostatic fluid which compose 70% of seminal fluid)
1. Penis

